

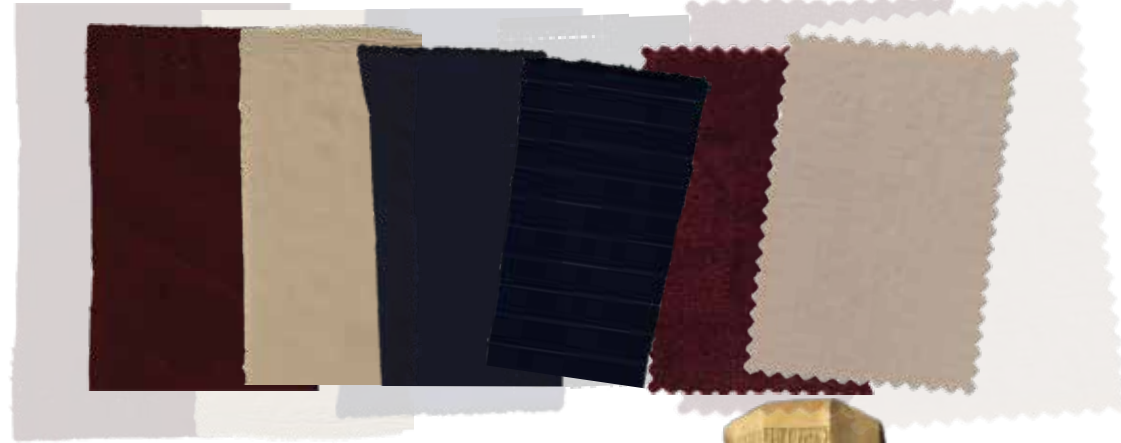
# فوضى ثقافية



## EGYPTIAN CULTURAL CHAOS



# فوضى ثقافية



**EGYPTIAN  
CULTURAL CHAOS**

key occupational influences in Egypt  
historical architecture and garment practicality  
Shingo Sato inspired advanced pattern cutting  
clean cuts, structured drapes and soft tailored silhouettes

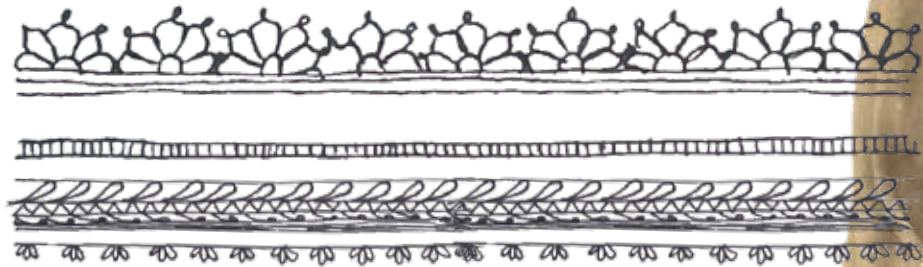


# Research Page

Unknown photographer, Egyptian women, 1880



Arusat al Burqa  
thin metal sheet and twisted wire  
worn to brighten up the black burqa and divert  
mens attention away from the woman's eyes

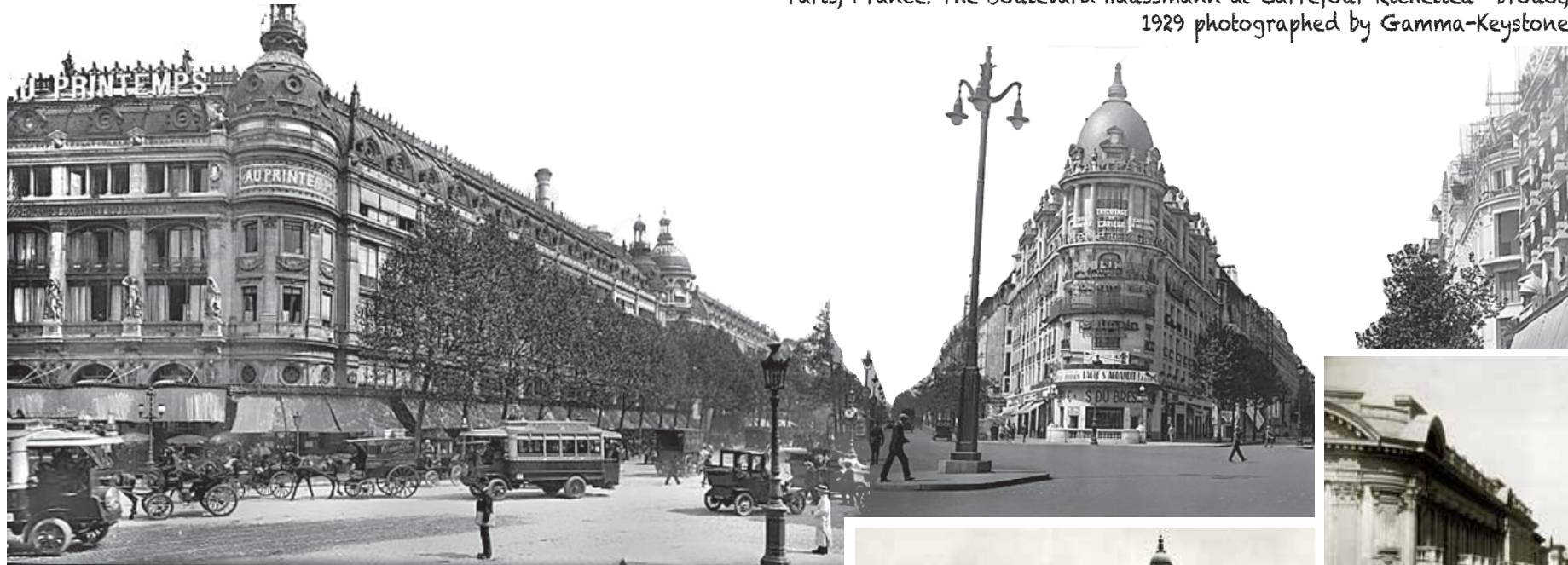


Photographed by J P Sebah, Femme Fellah, Egypt, circa 1880  
Photographed by Gabriel Lekegian, Danseuse Arabe (Almeh), Egypt, circa 1880



# Research Page

Paris, France: The Boulevard Haussmann at Carrefour Richelieu- Drouot, 1929 photographed by Gamma-Keystone



Paris (IXth district) Store "Le Printemps", Photographed by Haussmann boulevard CIRCA 1890:

The Grand Savoy Hotel, at Soliman Pasha Square, Downtown Cairo, Egypt, 1898 Photographed by Italians Working Abroad Archive

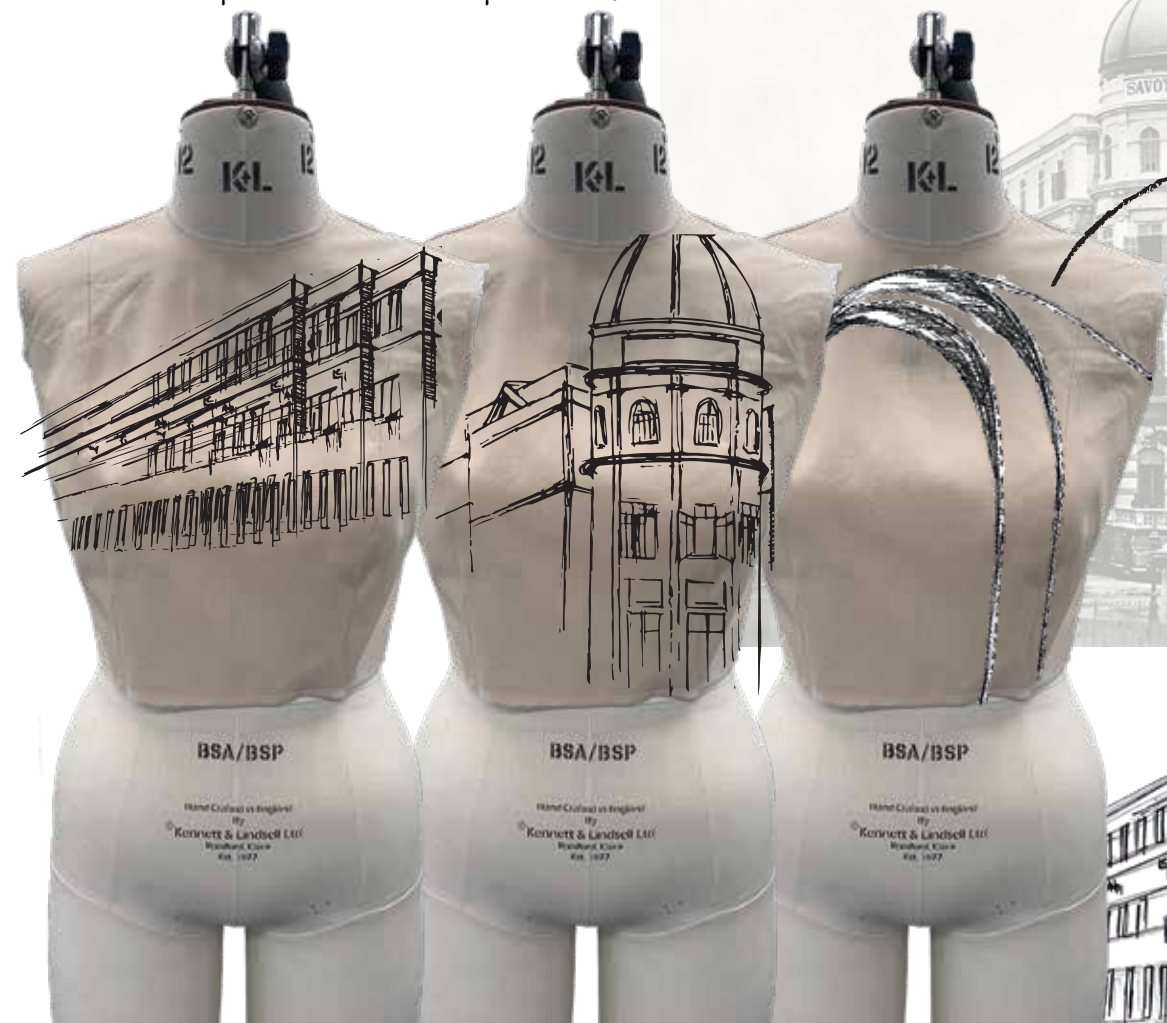


Cherif Pacha St., Downtown Alexandria, Egypt, 1880 Photographed by G. Lékégian & Cie.



sophisticated and simplistic architectural build

breaking down the different elements of this architectural style  
how can I incorporate it into the shape of the garment





# Sampling & Design Development

Pattern Magic - Tomoko Nakamichi, A collar with two distinct expressions



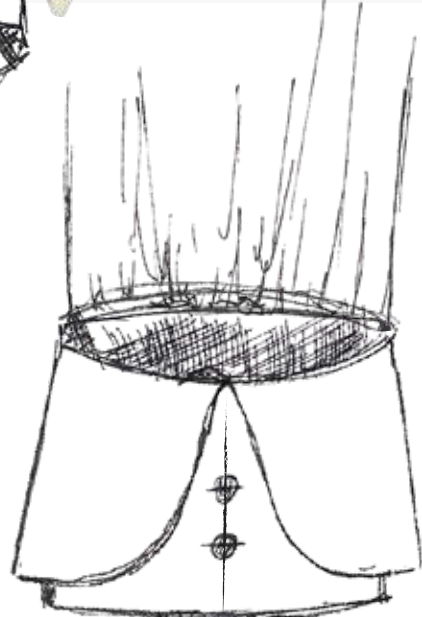
standard cocktail cuff (similar shape)



using pattern magic techniques in my own way immitating 2 layers by attaching a gusset



create draped effect using individual panels and gussets



Imitating the garment's layering with simple sophistication

Pattern cut gussets in place of drapes for elegant and sophisticated cut





# Sampling & Design Development

slanted front cross over



Continuous line from raglan top to jacket bodice



pattern cut as one piece using a gusset



deep armhole shape



one piece vest inspired a one piece raglan sleeve

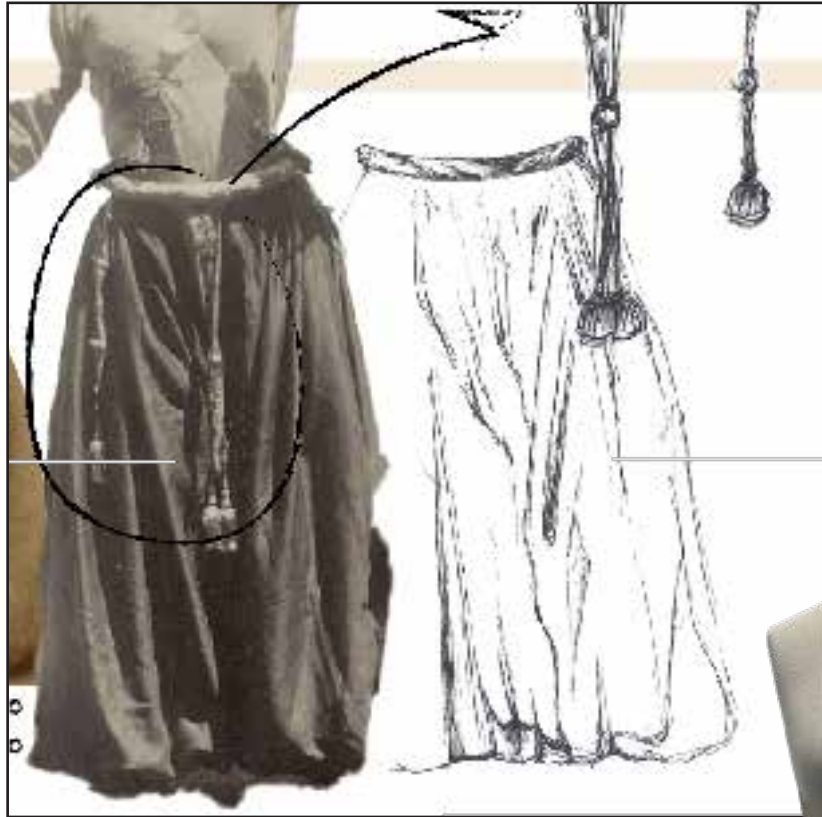


gusseted sleeve to add an illusion of layering  
sophisticated sleeve shape  
minimalist style lines for an effortless and chic finish





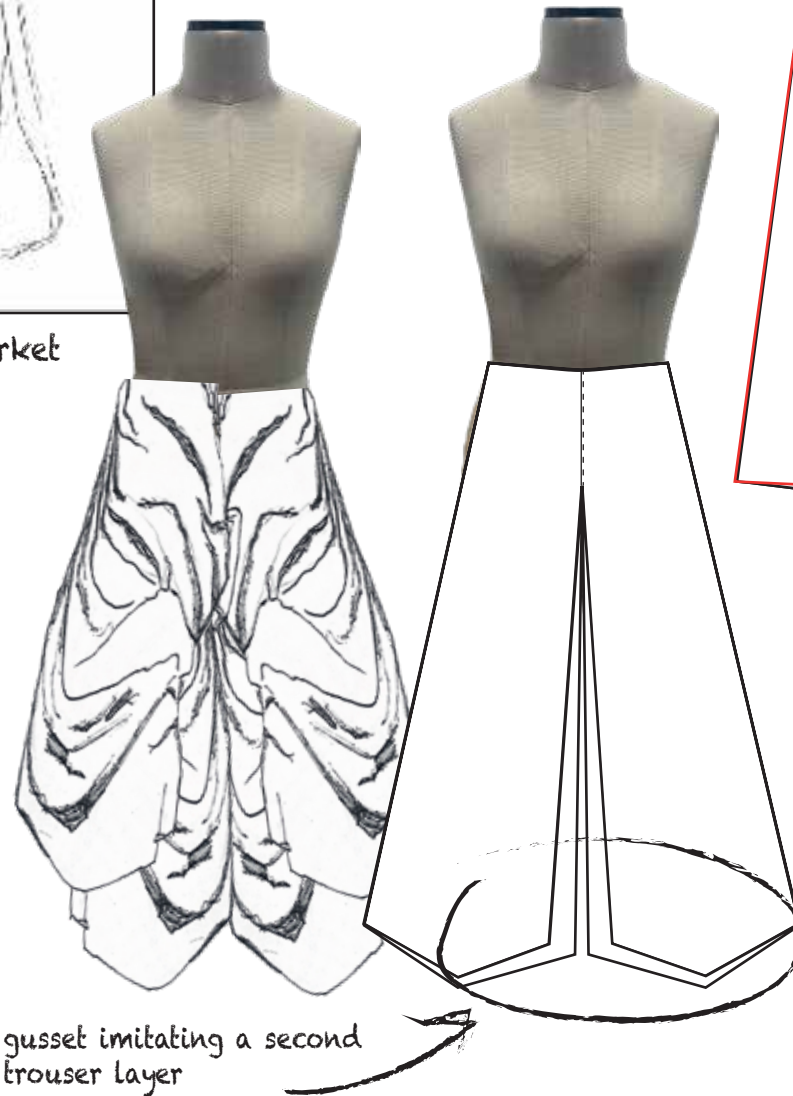
# Sampling & Design Development



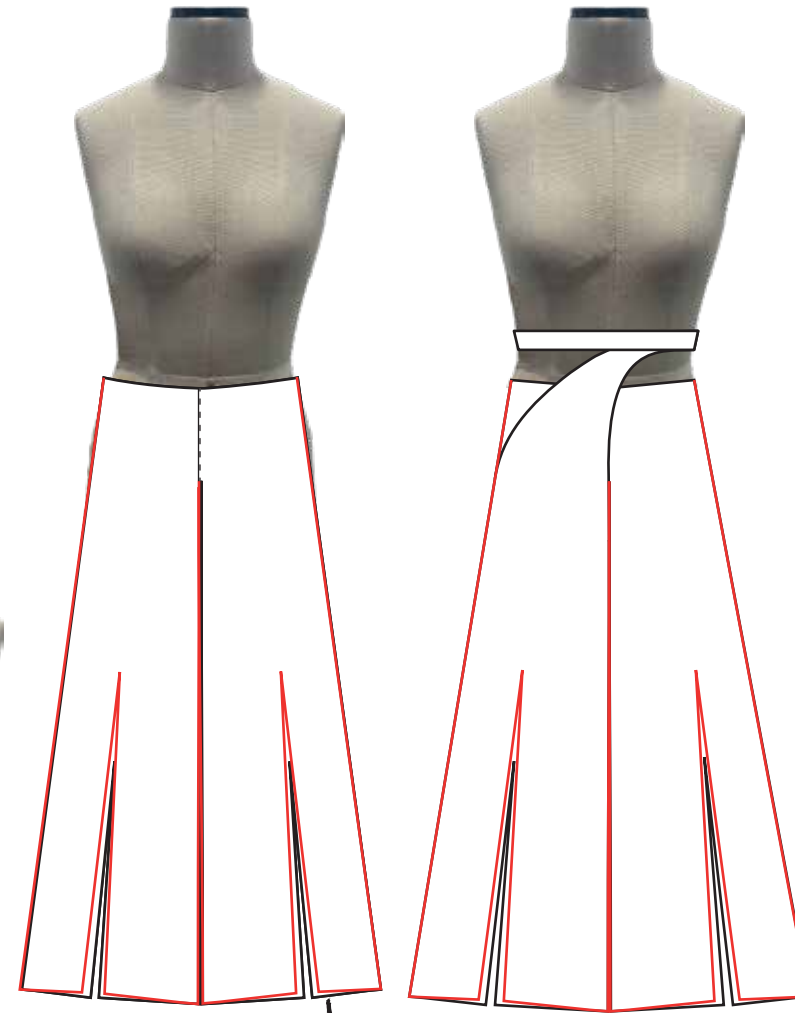
diffusing designs to align with target market



ed cuts and silhouettes



gusset imitating a second trouser layer



front slit with underneath gusset extra flared silhouette

- Trendy silhouette  
Maison Margiela trousers
- relaxed silhouette
  - sits perfectly circling the leg



# Sampling & Design Development

The diagram illustrates the design development process for a garment, starting from a basic concept and evolving through multiple iterations. It features several mannequins, sketches, and a final photograph of the garment.

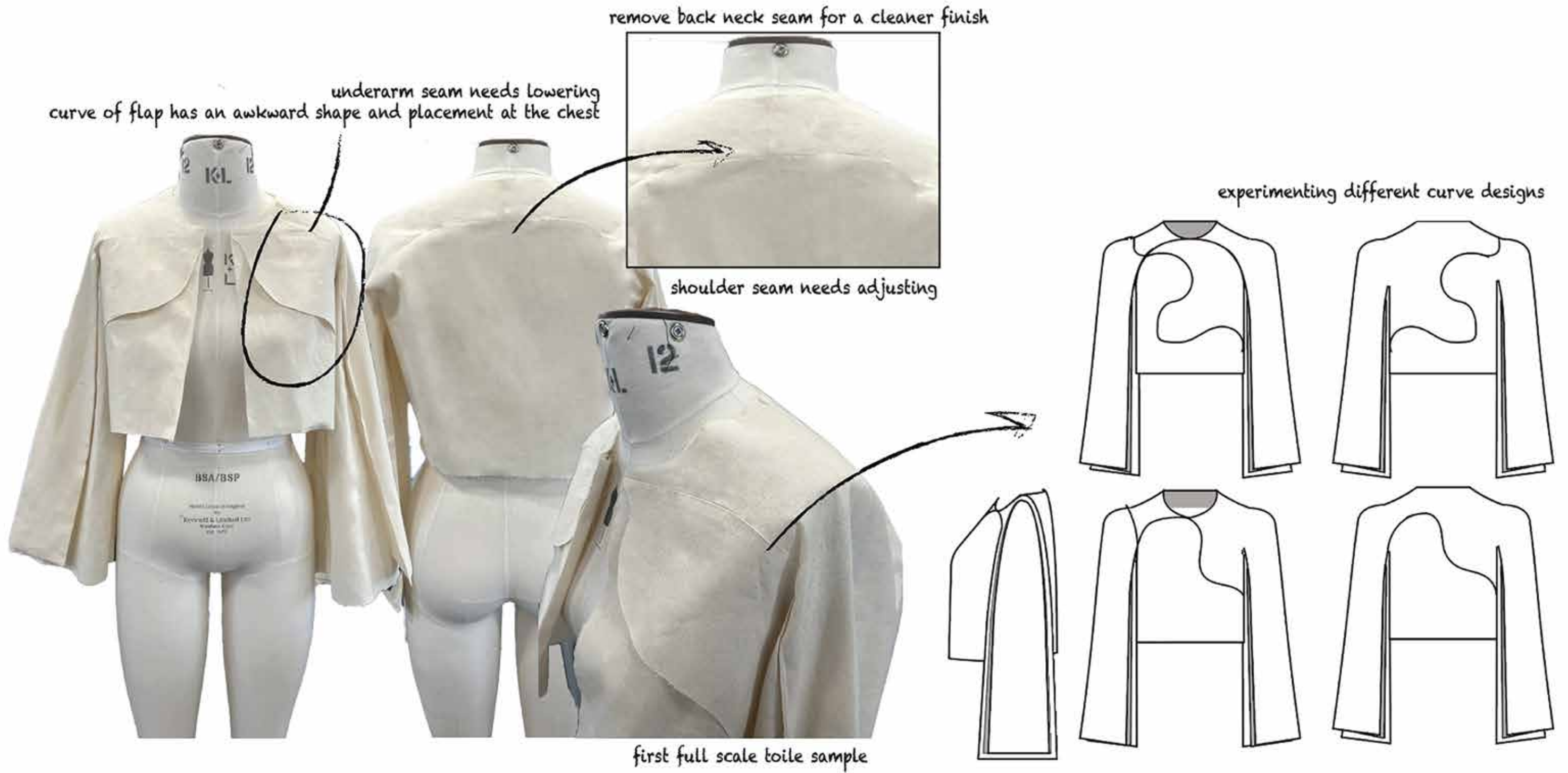
**Annotations and Design Notes:**

- shape manipulation**: Points to a sketch of a draped fabric.
- design is too basic and needs more developing**: Points to a simple skirt sketch.
- skirt could be pleated or ruffled**: Points to a sketch of a pleated skirt.
- draping overlay of waist**: Points to a sketch of a waist with a draped overlay.
- the overlaying drape hides all the flare and shape of the culottes**: Points to a mannequin wearing a garment with a draped overlay.
- flared culottes with knott draped overlay**: Points to a mannequin wearing a garment with a knotted overlay.
- design diffusion to suit target customer incorporating the knott and layering to create harmony across the designs**: Points to a sketch of a garment with a knotted waist.
- adding layers symmetrical or asymmetrical?**: Points to a sketch of a garment with multiple layers.
- designing culottes rather than a skirt to allow for more comfort and practicality create alot of flare to imitate the shape of the skirt designed previously**: Points to a sketch of a culotte-style garment.

The final photograph shows a person wearing a dark, layered garment with a prominent draped overlay, demonstrating the final design.



# Sampling & Toile Making

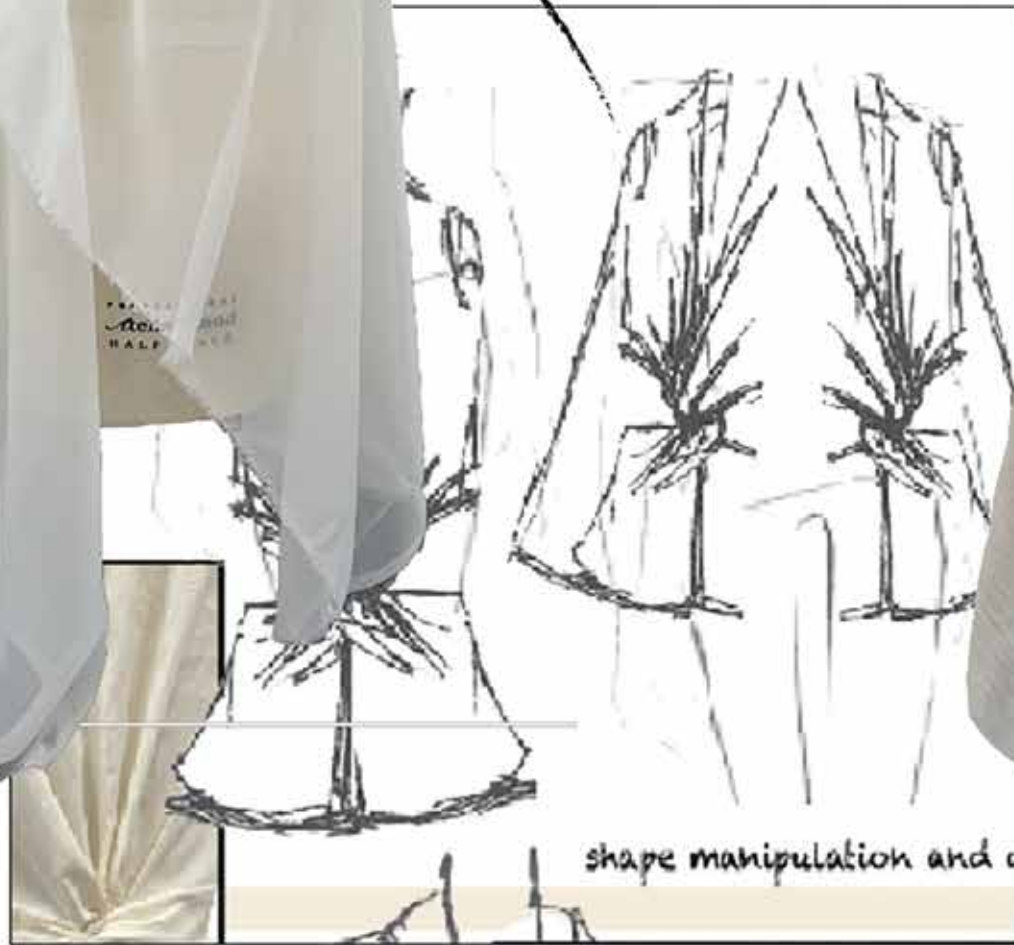




# Sampling & Toile Making



patterncut a one piece (no fastening)-  
capelette



shape manipulation and d



pin hem finishing



sampling the neck finishing  
the underneath facing keeps coming out due to the edge stitching  
the stich needs to be wider to hold the facing layer in place and give a  
cleaner finish to the garment



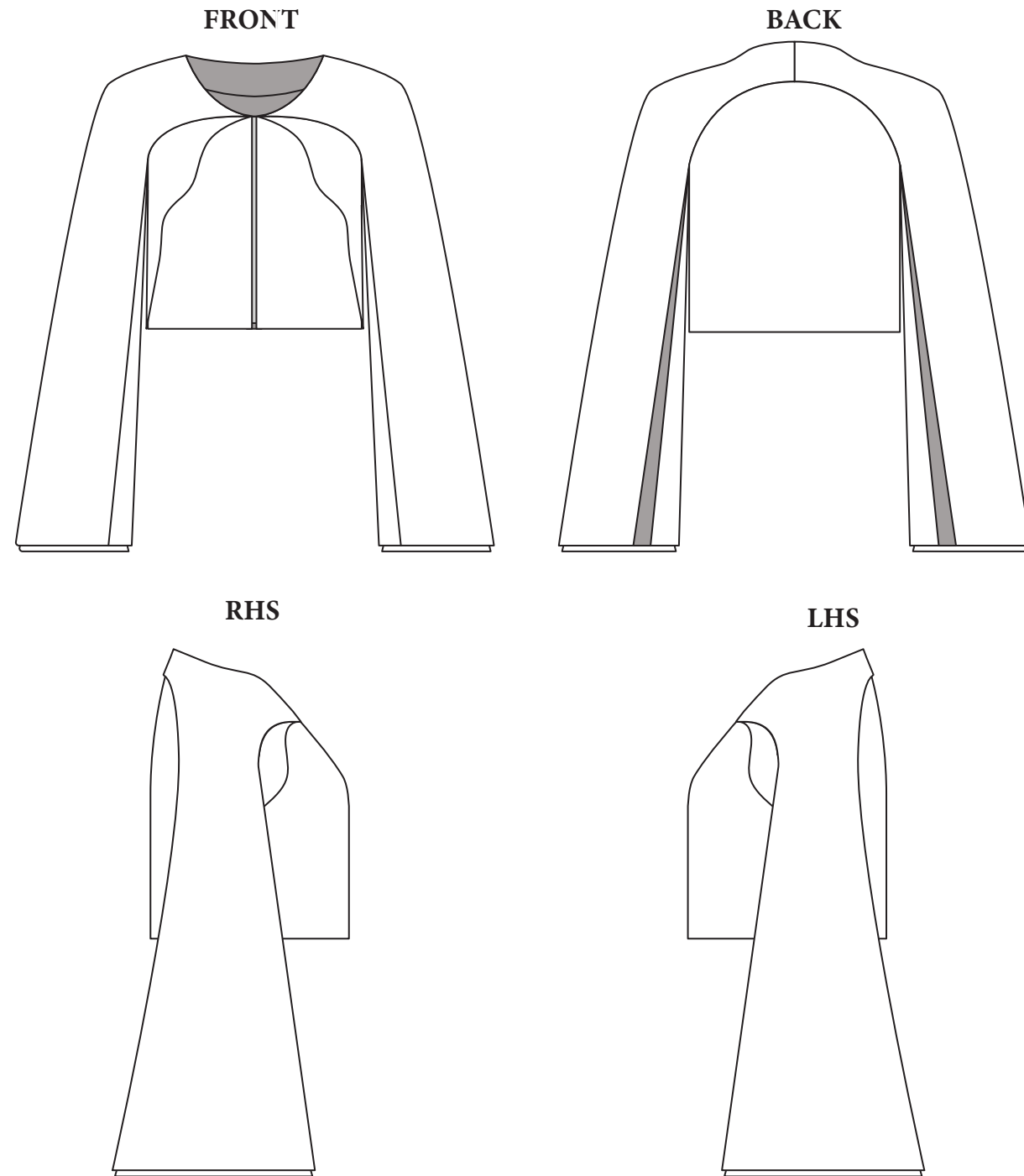
## MARIAM SHAMSELDIN

SEASON: AUT/WIN 25	STYLE: BOXY RAGLAN JACKET	FACTORY: STAFFORDSHIRE UNI
DATE SUBMITTED: 03/05/24	DEADLINE: 03/05/24	REQUEST: 1X SIZE 12

## MARIAM SHAMSELDIN

SEASON: AUT/WIN 25	STYLE: BOXY RAGLAN JACKET	FACTORY: STAFFORDSHIRE UNI
DATE SUBMITTED: 03/05/24	DEADLINE: 03/05/24	REQUEST: 1X SIZE 12

### FIT PICTURES

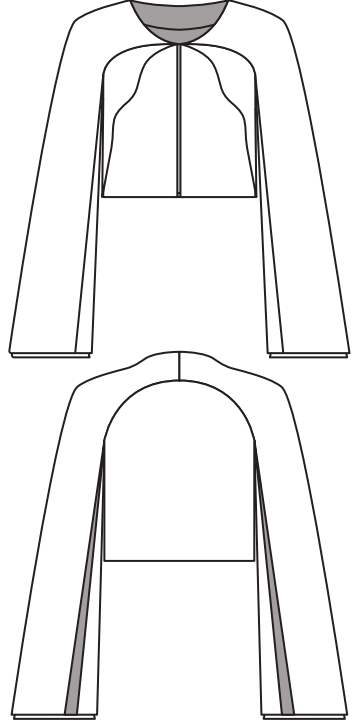



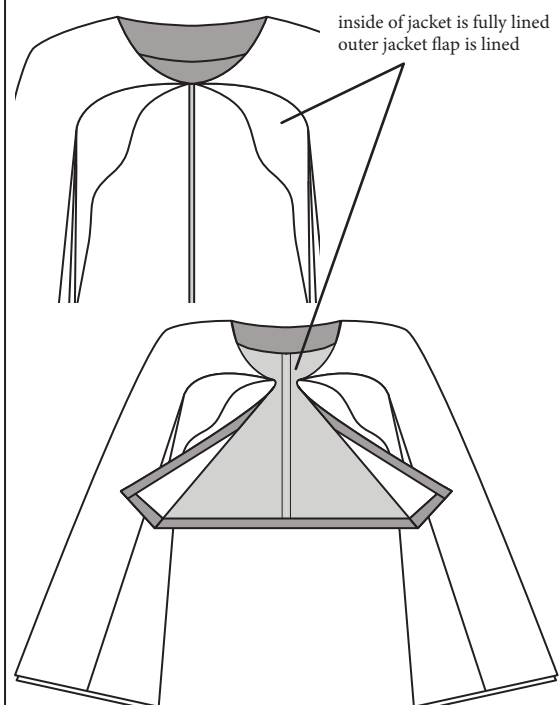
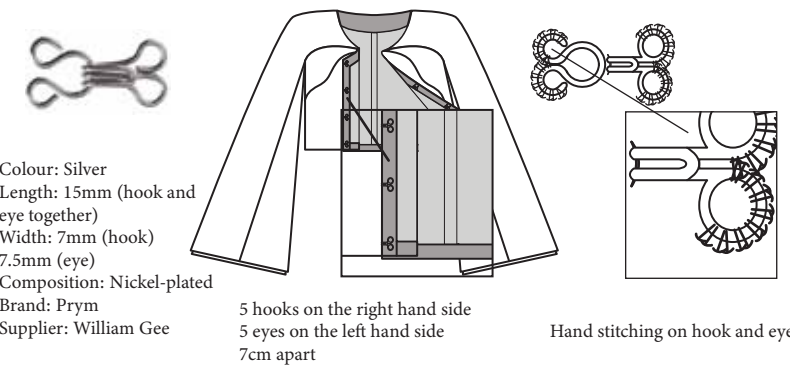
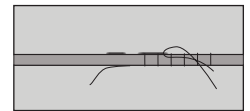




## MARIAM SHAMSELDIN

SEASON: AUT/WIN 25	STYLE: BOXY RAGLAN JACKET	FACTORY: STAFFORDSHIRE UNI
DATE SUBMITTED: 03/05/24	DEADLINE: 03/05/24	REQUEST: 1X SIZE 12

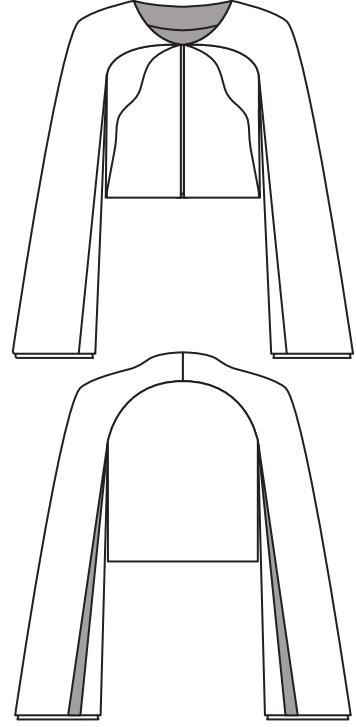
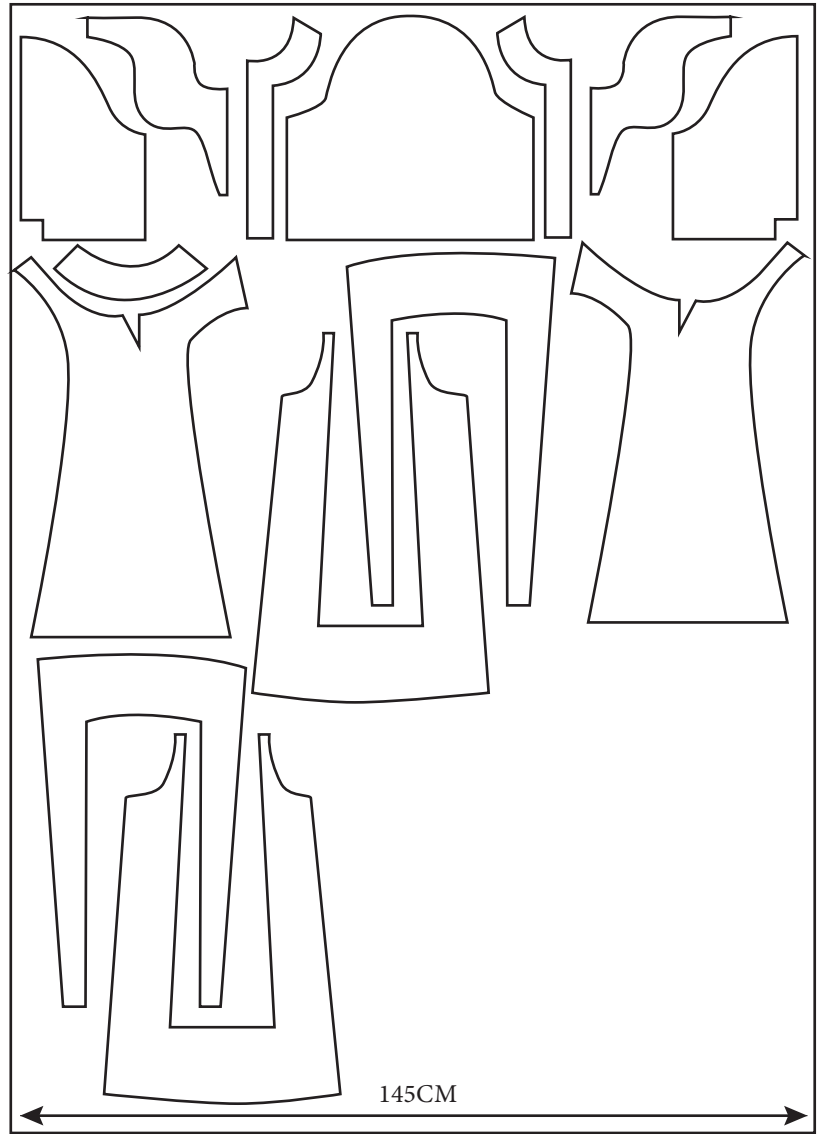
### BILL OF MATERIALS

	<b>FABRIC 1</b> CREPE FEEL STRETCH SUITING - DESRT SAND	
	 <p>Weight: Light / Medium GSM: 254 Composition: Wool &amp; Elastane Length: Order per metre Width: 142cm / 56inch Pattern Repeat: N/A Price Per Metre: £10.00 Supplier: FabWorks Fabric Code: M1a25 (M2d39)</p>	
	<b>LINING</b> POLY LINING - SILKY BEIGE	
	 <p>Weight: Light GSM: 51 Composition: 100% Polyester Length: Order per metre Width: 154cm / 60inch Pattern Repeat: N/A Price Per Metre: £3.00 Supplier: FabWorks Fabric Code: H1b11</p>	
	<b>FUSING</b> LIGHTWEIGHT IRON ON INTERFACING WHITE	
 <p>Weight: Light Length: Order per metre Width: 75cm Pattern Repeat: N/A Price Per Metre: £1.34 Supplier: Abakhan Fabric Code: SKU 462029</p>		
<b>STITCHING</b>	BEIGE THREAD	<b>HEM</b> BAGGED OUT
Stitch Shape: Straight stitch Stitch Length: 2.75cm		Entire jacket to be bagged out Hand stitch opening when bagged out
<b>LINING DETAILS</b>		<b>FASTENING</b>
		 <p>Colour: Silver Length: 15mm (hook and eye together) Width: 7mm (hook) 7.5mm (eye) Composition: Nickel-plated Brand: Prym Supplier: William Gee</p>
<b>EXTRA NOTES</b>		
 <ul style="list-style-type: none"> <li>- leave opening on the left hand side sleeve lining</li> <li>- slip stitch the opening closed</li> </ul>		

## MARIAM SHAMSELDIN

SEASON: AUT/WIN 25	STYLE: BOXY RAGLAN JACKET	FACTORY: STAFFORDSHIRE UNI
DATE SUBMITTED: 03/05/24	DEADLINE: 03/05/24	REQUEST: 1X SIZE 12

### BILL OF MATERIALS

	<b>LAYPLAN</b>
	
<b>SEQUENCE OF CONSTRUCTION</b>	
<ol style="list-style-type: none"> <li>1. Line flaps and understitch</li> <li>2. Attach flaps to front pieces using 0.5 S/A</li> <li>3. Sew side seams</li> <li>4. Sew bottom sleeve layer to gusset</li> <li>5. Sew gusset to main sleeve</li> <li>6. Sew shoulder seam</li> <li>7. Sew sleeve side seams</li> <li>8. Sew the centre back seam on both sleeves</li> <li>9. Attach the raglan sleeve to the bodice</li> <li>10. Tack back line pleat at the bottom and top</li> <li>11. Sew back neck facing to back lining</li> <li>12. Sew front facing to front lining</li> <li>13. Sew shoulder seam (back neck facing to front facing)</li> <li>14. Sew sleeve lining shoulder seam</li> <li>15. Sew sleeve lining side seam (leave opening on left sleeve for bagging out)</li> <li>16. Attach sleeve to main body</li> <li>17. Iron on interfacing on hem fold over on main fabric</li> <li>18. Bag out full jacket</li> <li>19. Hand stitch sleeve opening closed</li> <li>20. Hand sew hooks and eyes to jacket facing</li> </ol>	
<b>EXTRA NOTES</b>	
<ul style="list-style-type: none"> <li>- press open all seams</li> <li>- press seams after each step</li> <li>- snip seam allowances on corners for a sharper finish when pulling it the right way out</li> </ul>	



# Photoshoot





Photoshoot

