

Nunika Chungar

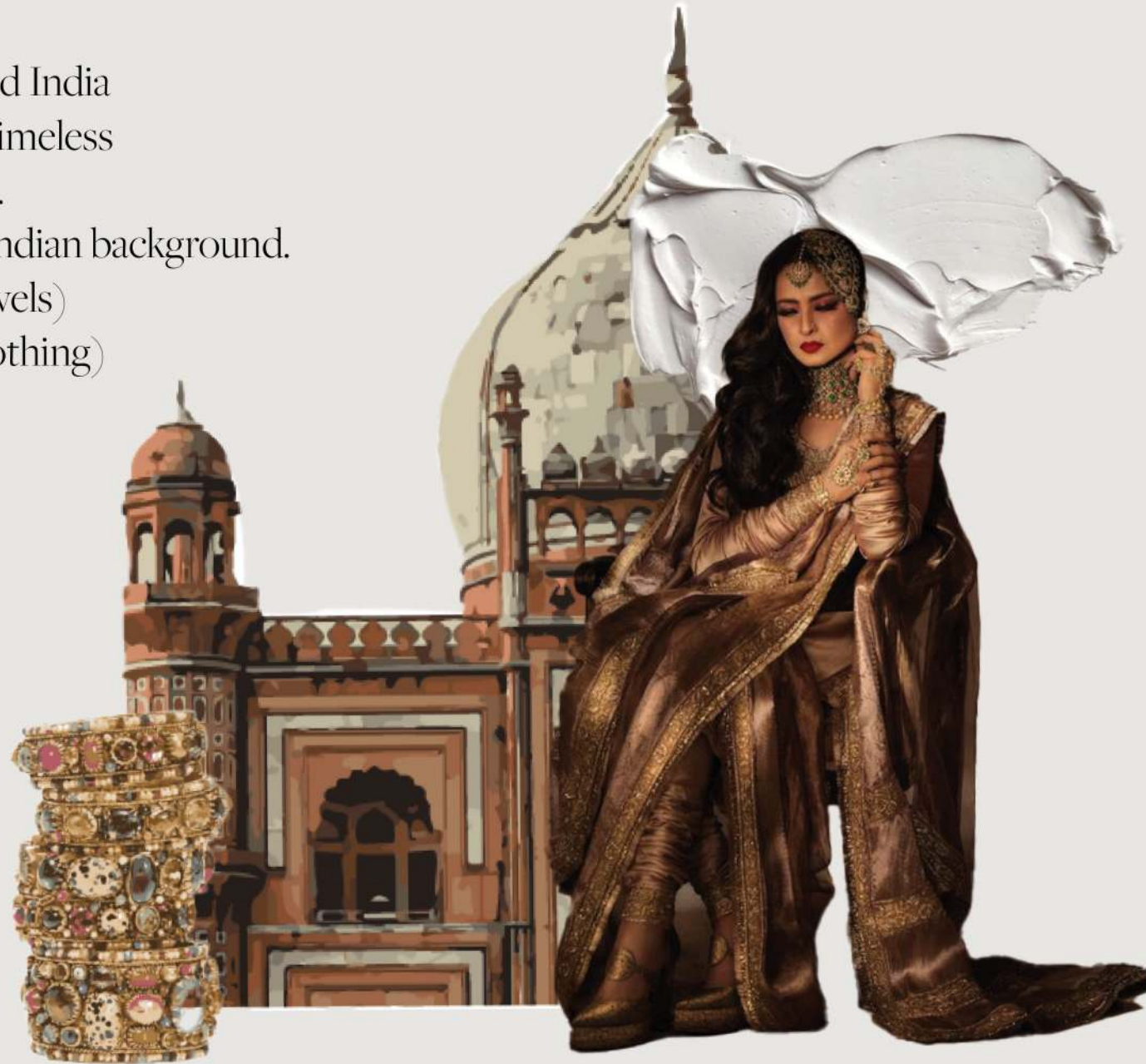
A morphed India



# कांसेप्ट (Concept)

The collection embodies a Morphed India  
An India that is fused between it's timeless  
silhouettes and contemporary flair .

This collection is a homage to my Indian background.  
The किले (forts), the जवाहिरात (jewels)  
and most importantly, the कपड़े (clothing)



Nunika Khungar - A Morphed India

# My Muse

Traveller



runs a creative business



High disposal income



likes money

Customer board



Coffee drinker

Pinterest and Instagram user



Appreciates art



Enjoys fashion and experimenting



self made



healthy eater

# क्लाइंट

# रंग



Black Duchess  
satin

Hand painted  
ivory crepe



gold, brown and  
black jacquard

Ivory crepe

Colour and fabric

The Contemporary



Gaurav Gupta



Sabyasachi

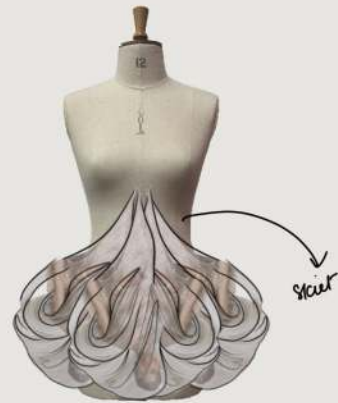
The Traditional

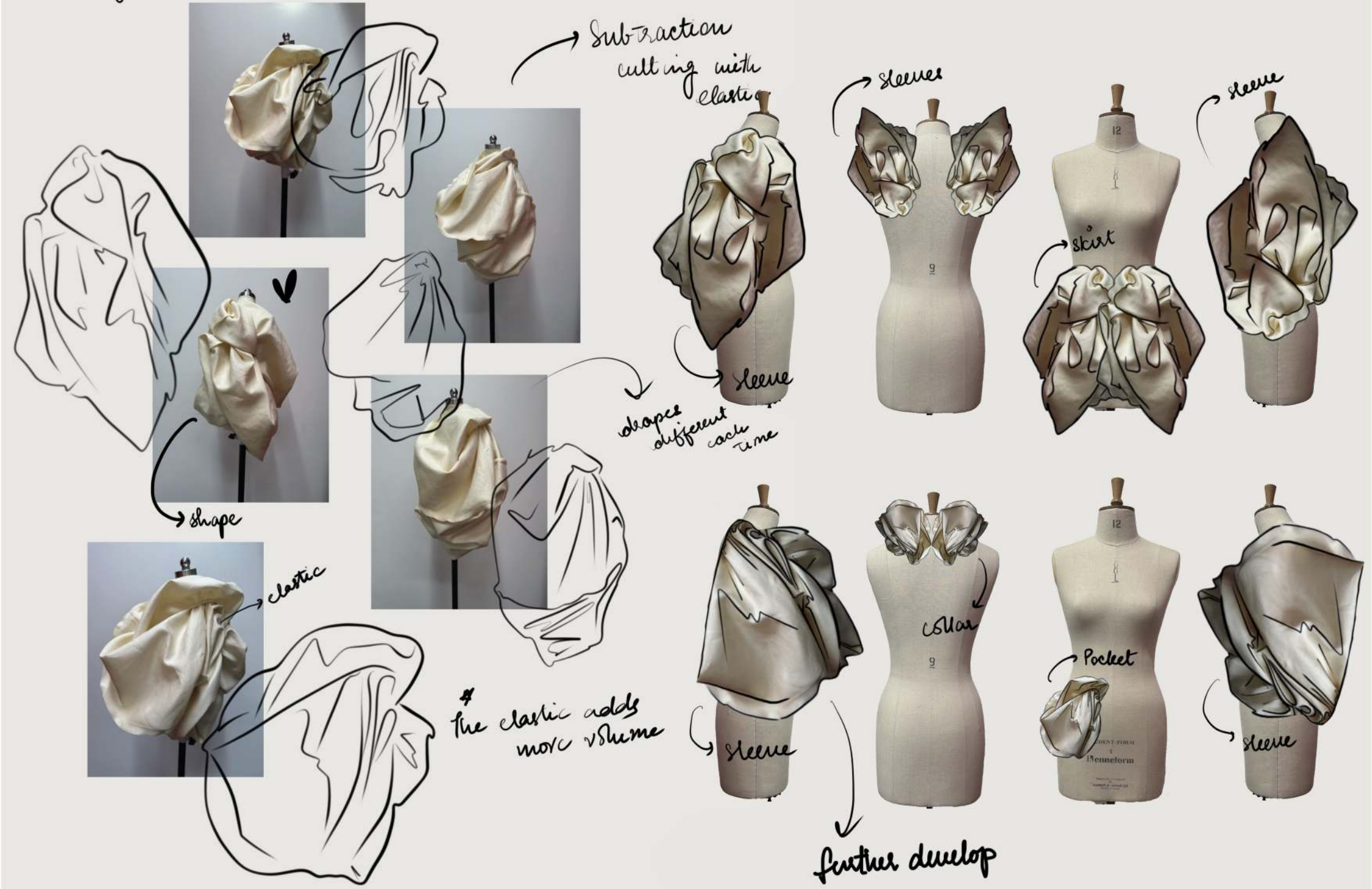


skirt



The morphed image





Subtraction cutting with elastic

sleeve

sleeve

skirt

shapes different each time

collar

Pocket

shape

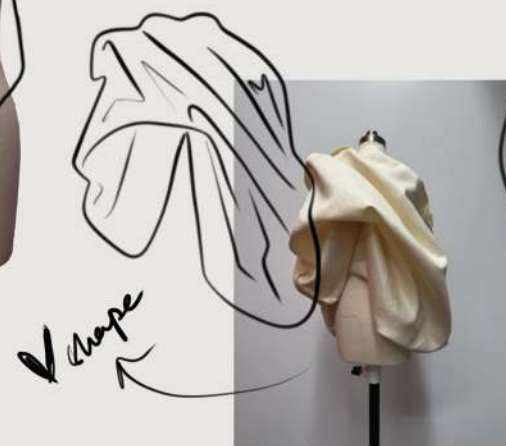
elastic

# the elastic adds more volume

sleeve

sleeve

further develop



Nur Khan - A Married India

Black and gold sequin fabric



Mixing together structure and drape

Further explored

Colour

Jacquard? (structure + weight)

Similar contours?

The circle





Neckline  
half  
circle  
+ looks bangle  
like

Structure  
+ drape



skirt





morphing the clothing  
and the bangle



The morphed  
image



transforming in a  
Jacket



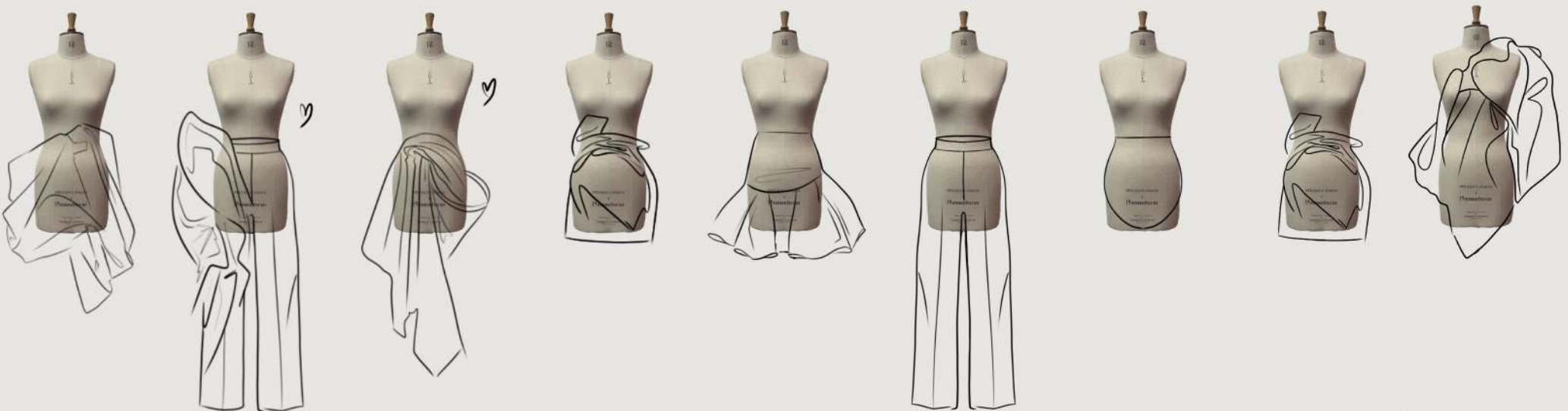
Refined  
Illustration



full scale edited and resized  
together for preview

Nunika Khungai - A Morphed India

Design development







*The Noir Hoop Dress*

*Magnetic Matt Duchess Satin Dress with a detachable and transformational Ivory crepe drape finished with a brass hoop detail*



*The Saturn Wrap Top & The Wristlet Skirt*

*One shoulder Jacquard top with a structured neckline finished with a gold button fastening paired with Hand painted Ivory Crepe draped Skirt with a detachable gold bangle that can be worn multiple ways*



*The Qila (कलि) Bodysuit & The Noir  
Curve Trouser*

*An Ivory Crepe bodysuit curated with gold  
foiling and embroidery with an Arch style  
line paired with Magnetic Matt Duchess  
Trouser with a detachable and transforma-  
tional Jacquard drape*



*The Éclat coat & The barely there Bodysuit*

*Crafted from Jacquard in hues of fawn,  
gold and black reminiscent of the Sari, the  
coat offers infinite styling options featuring  
a detachable gold hoop paired with Black  
stretch duchess satin bodysuit with a low  
back finished with a zipper fastening*

